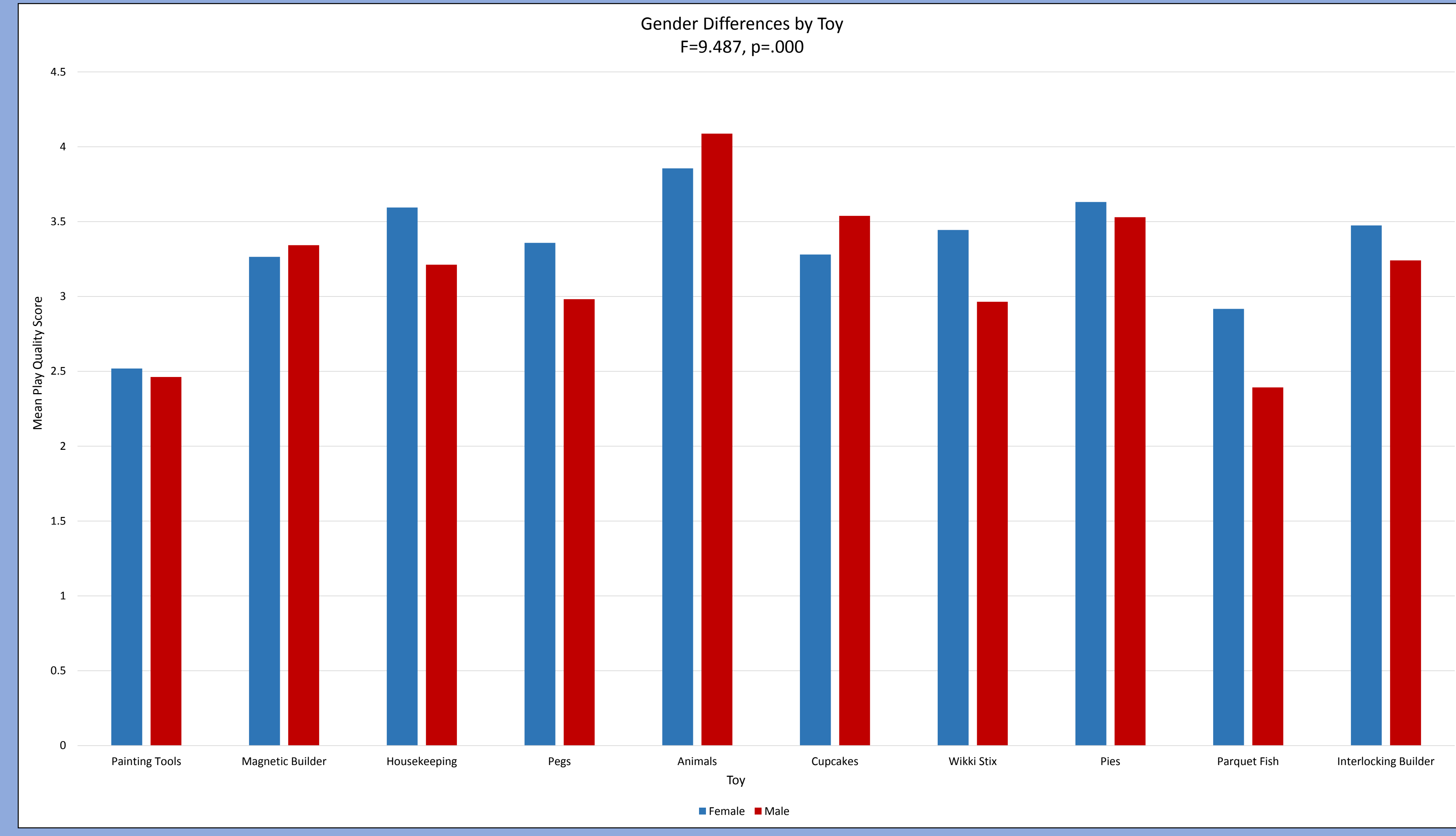
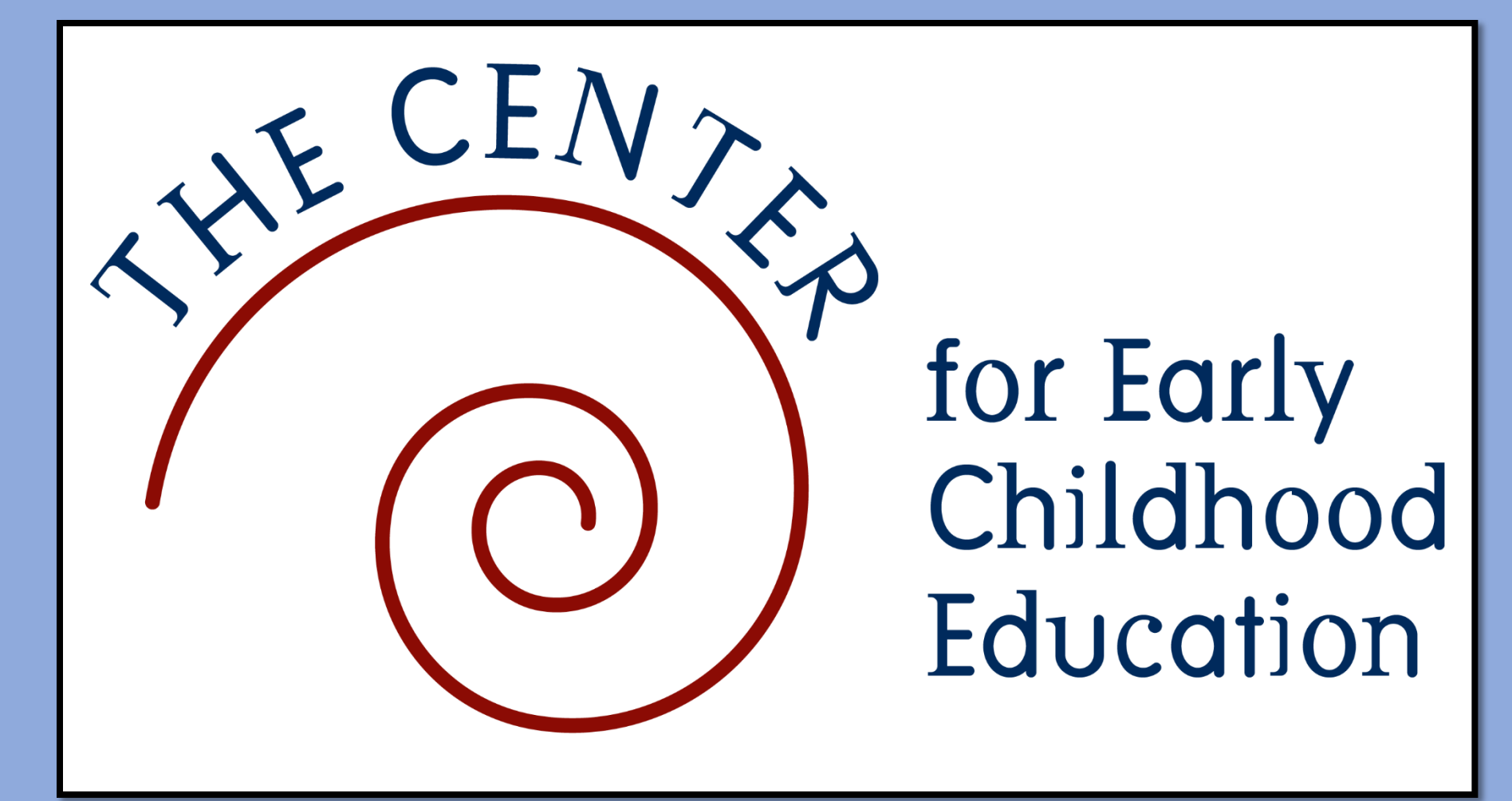




Quality of Young Children's Play with Toys: Effects of Age, Socioeconomic Status, Gender, and Ethnicity

Jeffrey Trawick-Smith, Ed.D., & Julia DeLapp, M.A., Co-Principal Investigators
Stephanie Dominguez, Nicole Green, Dominique McLean, & Amanda Terenzi, Student Researchers



Abstract

This annual study examines the effects of specific toys on the play of three- and four-year-old children in culturally diverse preschool classrooms. For the 2017 study, 10 toys were placed in 4 classrooms for 2 weeks. Children's play with each toy was video-recorded twice during free play time in each classroom. Researchers coded 7,682 5-minute observations of play using the Toy Effects on Play Instrument (TEPI – developed in a previous study). Toys were found to vary significantly in their impact on play quality. TEPI scores were also found to vary for each toy depending on the gender, socioeconomic status, age, and ethnicity of the child playing with it.

