

FLOOR PLANS CAPACITY CHARTS

THE WESTIN
MICHIGAN AVENUE
CHICAGO



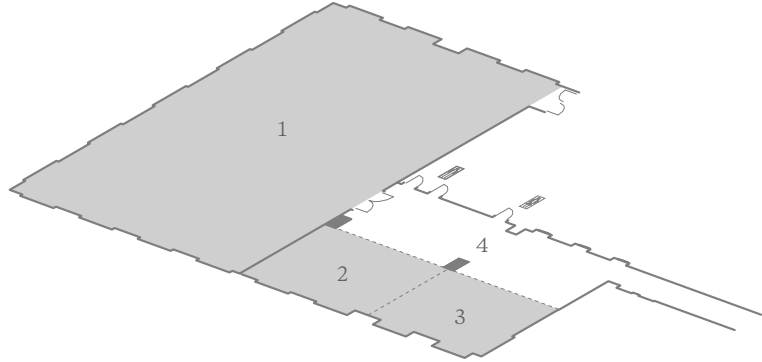
MEETING SPACE OVERVIEW

909 North Michigan Avenue
Chicago, Illinois 60611
T 312.943.7200 F 312.397.5580
E wma.offers@westin.com
thewestinmichiganavenue.com

THE WESTIN
MICHIGAN AVENUE
CHICAGO

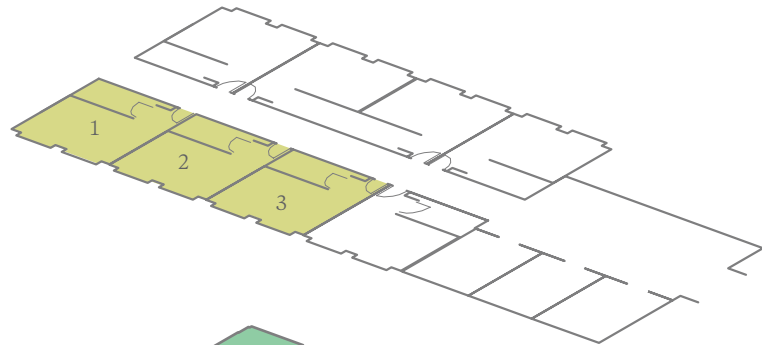
SIXTHTEENTH FLOOR

1. CHICAGO BALLROOM
2. CHICAGO I
3. CHICAGO II
4. CHICAGO FOYER



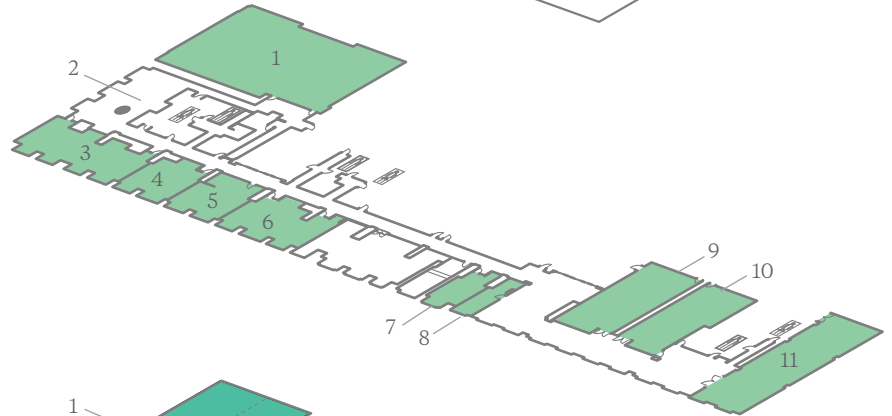
FIFTH FLOOR

1. ADDISON
2. SHEFFIELD
3. WAVELAND



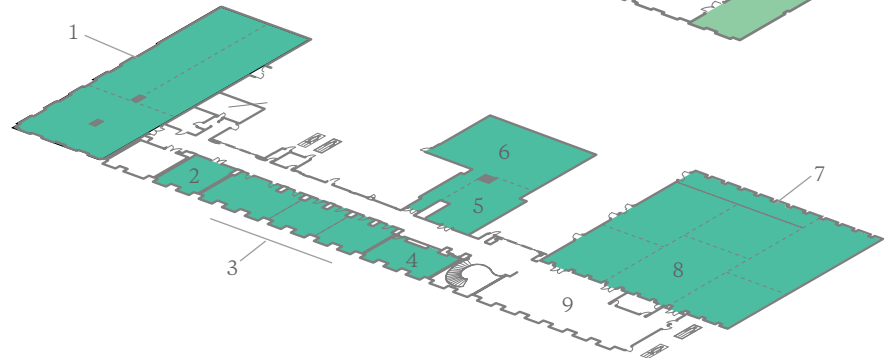
THIRD FLOOR

1. MILLENNIUM PARK
2. GRANT PARK FOYER
3. GRANT PARK
4. GARFIELD PARK
5. PARKS BOARDROOM
6. MARQUETTE PARK
7. JACKSON PARK
8. BURNHAM PARK
9. WASHINGTON PARK I
10. WASHINGTON PARK II
11. LINCOLN PARK



SECOND FLOOR

1. MICHIGAN BALLROOM
2. SUPERIOR WEST
3. HURON
4. SUPERIOR EAST
5. ERIE
6. ONTARIO
7. GREAT LAKES BALLROOM
8. PREFUNCTION
9. GREAT LAKES FOYER



ROOMS AT A GLANCE

TOTAL GUEST ROOMS	752
TOTAL MEETING ROOMS	34
LARGEST MEETING ROOM CAPACITY	900
LARGEST MEETING ROOM SIZE	720 m ² / 7,749 ft ²

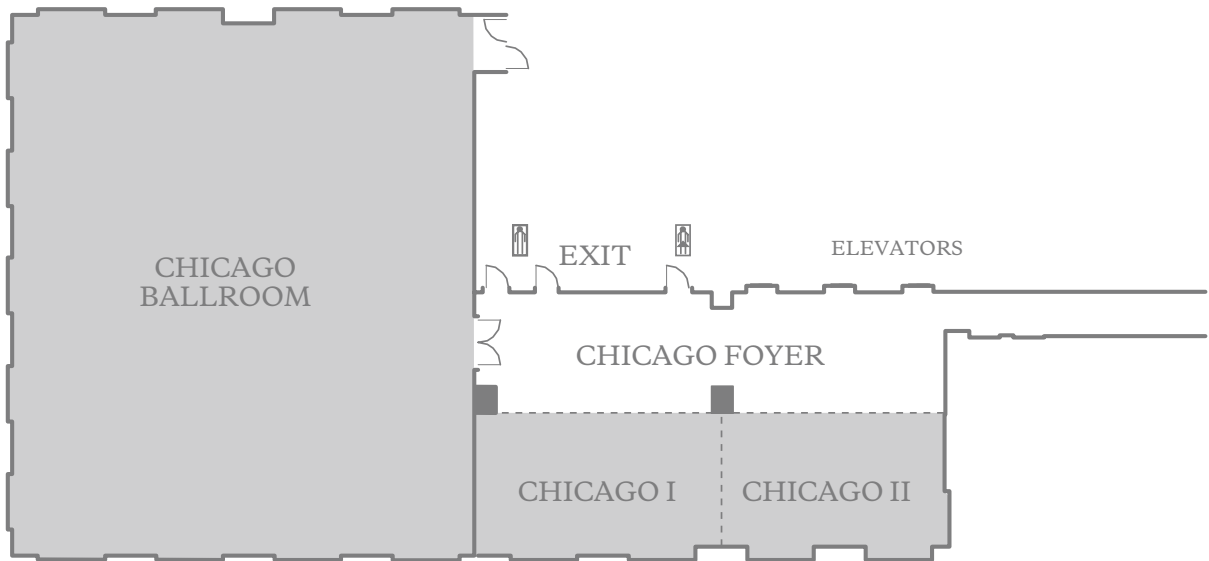
Additional spaces for meetings and events, not displayed here, may also be available. Contact your hotel representative for more information.

This document contains approximate measurements and square footage that are for illustrative purposes only. We cannot guarantee the floor plan accuracy or completeness, therefore encourage you to review the space to make sure it is suitable for your event.

MEETING SPACE SIXTEENTH FLOOR

909 North Michigan Avenue
Chicago, Illinois 60611
T 312.943.7200 F 312.397.5580
E wma.offers@westin.com
thewestinmichiganavenue.com

THE WESTIN
MICHIGAN AVENUE
CHICAGO



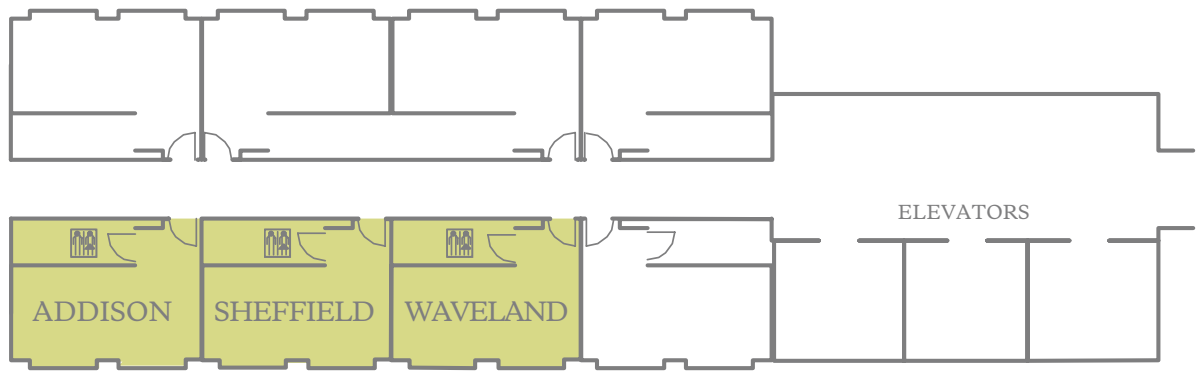
	DIMENSIONS	AREA (SQ. FT.)	MAX CEILING HEIGHT	THEATER	THEATER CHEVRON	CLASSROOM	CLASSROOM CHEVRON	BANQUET	BANQUET CHEVRON	CONFERENCE	U-SHAPE	HOLLOW SQ.	RECEPTION
■ CHICAGO BALLROOM	56' X 62'	3,217	10'	308	279	144	105	250	250	—	60	66	350
CHICAGO FOYER	30' X 53'	1,518	10'	—	—	—	—	—	—	—	—	—	159

This document contains approximate measurements and square footage that are for illustrative purposes only. We cannot guarantee the floor plan accuracy or completeness, therefore encourage you to review the space to make sure it is suitable for your event.

MEETING SPACE FIFTH FLOOR

909 North Michigan Avenue
Chicago, Illinois 60611
T 312.943.7200 F 312.397.5580
E wma.offers@westin.com
thewestinmichiganavenue.com

THE WESTIN
MICHIGAN AVENUE
CHICAGO

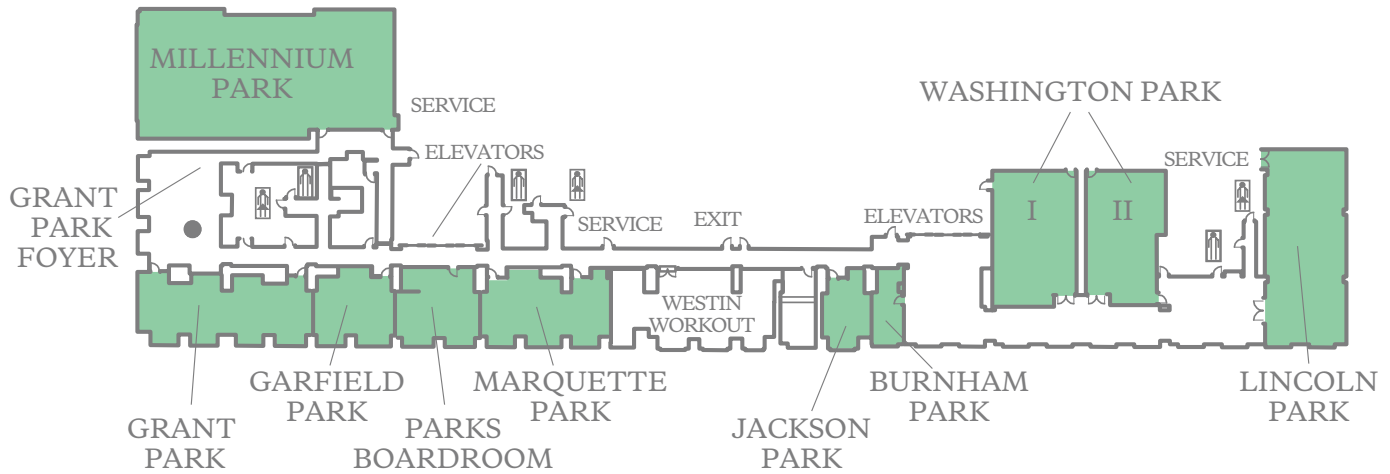


	DIMENSIONS	AREA (SQ. FT.)	MAX CEILING HEIGHT	THEATER	THEATER CHEVRON	CLASSROOM	CLASSROOM CHEVRON	BANQUET	BANQUET CHEVRON	CONFERENCE	U-SHAPE	HOLLOW SQ.	RECEPTION
■ ADDISON	28' X 27'	540	9.1'	30	—	18	—	30	30	16	12	16	35
■ SHEFFIELD	28' X 27'	539	9.1'	30	—	18	—	30	30	16	12	16	35
■ WAVELAND	28' X 27'	538	9.1'	30	—	18	—	30	30	16	12	16	35

MEETING SPACE THIRD FLOOR

909 North Michigan Avenue
Chicago, Illinois 60611
T 312.943.7200 F 312.397.5580
E wma.offers@westin.com
thewestinmichiganavenue.com

THE WESTIN
MICHIGAN AVENUE
CHICAGO



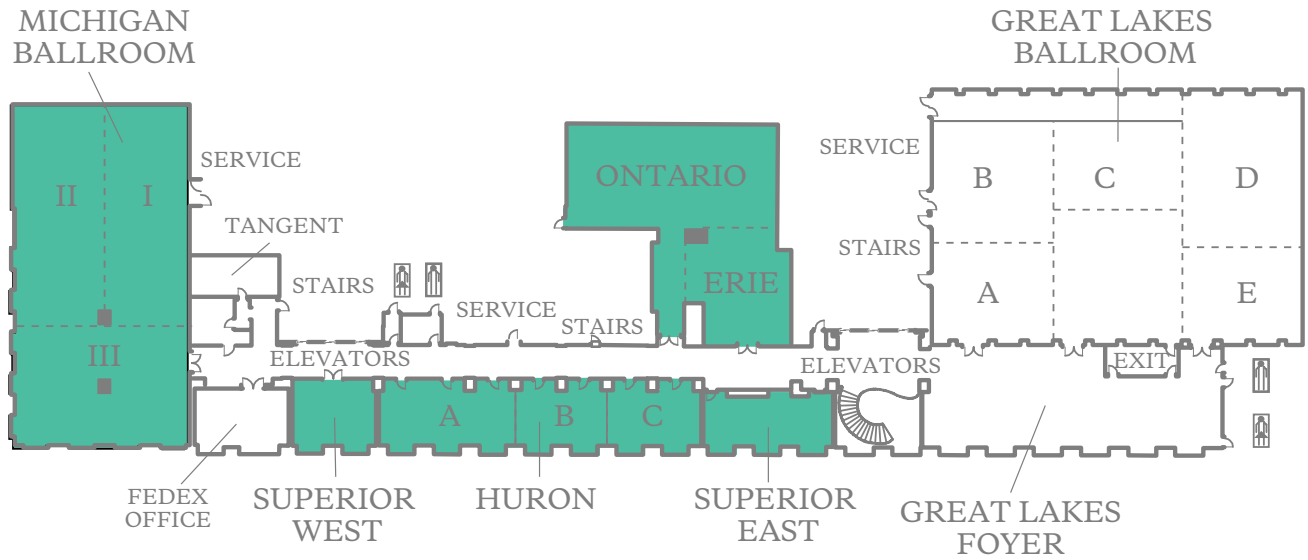
	DIMENSIONS	AREA (SQ. FT.)	MAX CEILING HEIGHT	THEATER	THEATER CHEVRON	CLASSROOM	CLASSROOM CHEVRON	BANQUET	BANQUET CHEVRON	CONFERENCE	U-SHAPE	HOLLOW SQ.	RECEPTION
■ GARFIELD PARK	24' X 26'	547	8'	35	—	18	—	40	40	16	12	16	30
■ GRANT PARK	22 X 54'	1,048	8'	84	—	36	—	80	50	48	39	42	90
GRANT PARK FOYER	26' X 38'	892	8'	—	—	—	—	—	—	—	—	—	93
■ JACKSON PARK	24' X 15'	305	8'	15	—	9	—	20	20	10	8	—	15
■ LINCOLN PARK	25' X 62'	1,528	9'	150	—	87	—	120	110	54	48	54	125
■ MARQUETTE PARK	24' X 39'	826	8'	70	—	33	—	50	40	24	21	24	60
■ MILLENNIUM PARK	40' X 82'	3,113	8'	294	138	156	80	260	300	72	60	78	300
■ PARKS BOARDROOM	24' X 26'	562	8'	—	—	—	—	—	—	14	—	—	59
■ WASHINGTON PARK I	41' X 26'	1,047	10'	70	48	45	—	60	80	20	16	20	70
■ WASHINGTON PARK II	42' X 25'	951	10'	72	—	45	—	60	60	24	20	24	70

This document contains approximate measurements and square footage that are for illustrative purposes only. We cannot guarantee the floor plan accuracy or completeness, therefore encourage you to review the space to make sure it is suitable for your event.

MEETING SPACE SECOND FLOOR, PART ONE

909 North Michigan Avenue
Chicago, Illinois 60611
T 312.943.7200 F 312.397.5580
E wma.offers@westin.com
thewestinmichiganavenue.com

THE WESTIN
MICHIGAN AVENUE
CHICAGO



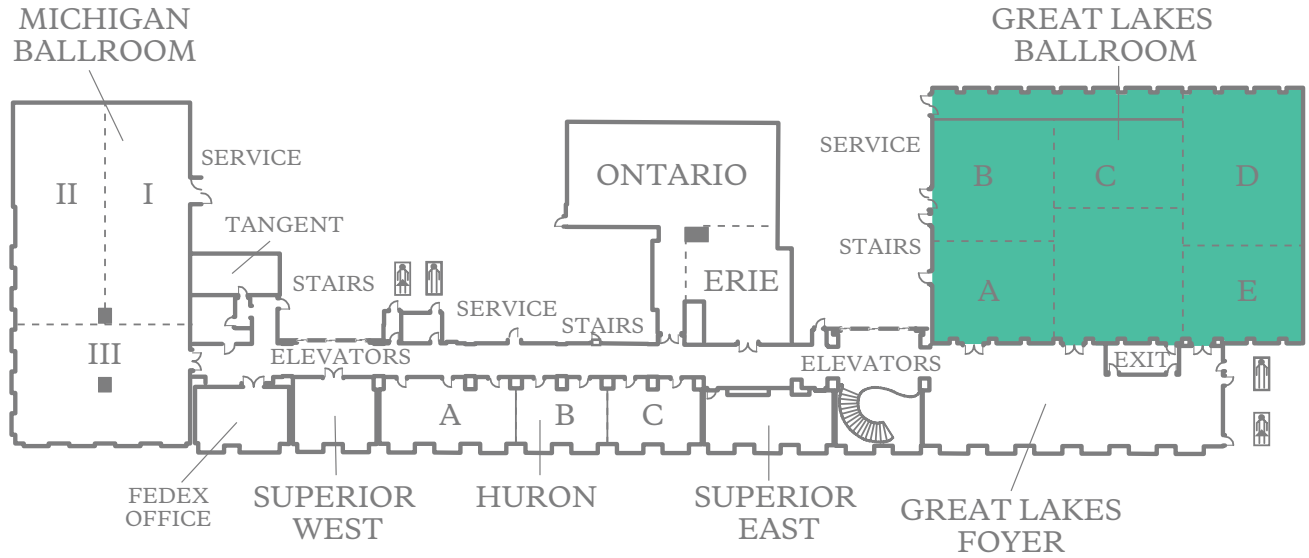
	DIMENSIONS	AREA (SQ. FT.)	MAX CEILING HEIGHT	THEATER	THEATER CHEVRON	CLASSROOM	CLASSROOM CHEVRON	BANQUET	BANQUET CHEVRON	CONFERENCE	U-SHAPE	HOLLOW SQ.	RECEPTION
■ ONTARIO & ERIE	63' X 65'	3,026	12'	214	—	98	—	240	150	—	—	—	300
■ ERIE	31' X 30'	844	12'	69	—	42	—	54	50	24	24	24	70
■ ONTARIO	61' X 61'	2,182	12'	191	—	93	—	150	170	48	39	48	200
■ HURON	20' X 93'	1,758	12'	156	—	114	—	130	60	48	—	—	200
■ HURON A	20' X 40'	754	12'	63	—	36	—	—	40	30	23	30	75
■ HURON A - B	20' X 66'	1,249	12'	119	—	72	—	80	70	48	37	48	125
■ HURON B	20' X 26'	495	12'	35	—	18	—	30	20	16	12	16	40
■ HURON B - C	20' X 54'	1,004	12'	84	—	54	—	60	40	42	31	42	75
■ HURON C	20' X 27'	509	12'	35	—	18	—	30	10	12	12	16	40
■ MICHIGAN BALLROOM	55' X 99'	5,100	12'	506	365	288	216	430	550	—	—	—	550
■ MICHIGAN I	27' X 64'	1,686	12'	160	—	72	—	120	110	48	39	42	125
■ MICHIGAN I- II	55' X 64'	3,305	12'	415	276	192	111	230	350	30	60	—	400
■ MICHIGAN II	28' X 64'	1,619	12'	150	—	64	—	120	110	48	39	42	125
■ MICHIGAN III	52' X 35'	1,795	12'	—	—	—	—	90	120	—	—	—	125
■ SUPERIOR EAST	17' X 38'	602	10'	40	—	15	—	40	30	16	14	16	50
■ SUPERIOR WEST	19' X 24'	452	10'	30	—	18	—	32	30	16	12	16	40

This document contains approximate measurements and square footage that are for illustrative purposes only. We cannot guarantee the floor plan accuracy or completeness, therefore encourage you to review the space to make sure it is suitable for your event.

MEETING SPACE SECOND FLOOR, PART TWO

909 North Michigan Avenue
Chicago, Illinois 60611
T 312.943.7200 F 312.397.5580
E wma.offers@westin.com
thewestinmichiganavenue.com

THE WESTIN
MICHIGAN AVENUE
CHICAGO



	DIMENSIONS	AREA (SQ. FT.)	MAX CEILING HEIGHT	THEATER	THEATER CHEVRON	CLASSROOM	CLASSROOM CHEVRON	BANQUET	BANQUET CHEVRON	CONFERENCE	U-SHAPE	HOLLOW SQ.	RECEPTION
GREAT LAKES FOYER	30' X 87'	2,358	13'	—	—	—	—	—	—	—	—	—	248
■ GREAT LAKES GRAND BALLROOM	73' X 108'	7,749	13'	867	660	420	273	590	840	—	—	—	900
■ GREAT LAKES 1	65' X 35'	2,244	13'	238	—	90	—	170	180	48	45	48	250
■ GREAT LAKES 1 & 2	73' X 72'	5,255	13'	506	402	240	240	420	460	60	60	60	553
■ GREAT LAKES 2	65' X 37'	2,385	13'	240	182	108	56	180	210	48	45	48	251
■ GREAT LAKES 3	73' X 35'	2,494	13'	224	180	114	64	210	200	48	48	48	275
■ GREAT LAKES A	32' X 35'	1,112	13'	112	—	48	—	80	80	28	27	28	125
■ GREAT LAKES B	32' X 35'	1,133	13'	112	—	45	—	80	90	28	27	30	125
■ GREAT LAKES C	24' X 37'	894	13'	80	—	36	—	60	60	24	20	24	90
■ GREAT LAKES D	41' X 35'	1,399	13'	144	—	60	—	90	100	34	30	36	150
■ GREAT LAKES E	32' X 35'	1,095	13'	108	60	48	16	90	80	28	27	30	115
■ GREAT LAKES EAST	73' X 51'	3,726	13'	340	300	177	135	280	360	48	48	48	392
■ GREAT LAKES PREFUNCTION	40' X 37'	1,491	13'	—	—	—	—	—	—	—	—	—	—
■ GREAT LAKES WEST	73' X 56'	3,998	13'	330	356	171	162	320	390	48	48	48	420

This document contains approximate measurements and square footage that are for illustrative purposes only. We cannot guarantee the floor plan accuracy or completeness, therefore encourage you to review the space to make sure it is suitable for your event.



909 North Michigan Avenue
Chicago, Illinois 60611
T 312.943.7200 F 312.397.5580
E wma.offers@westin.com
thewestinmichiganavenue.com

THE WESTIN
MICHIGAN AVENUE
CHICAGO